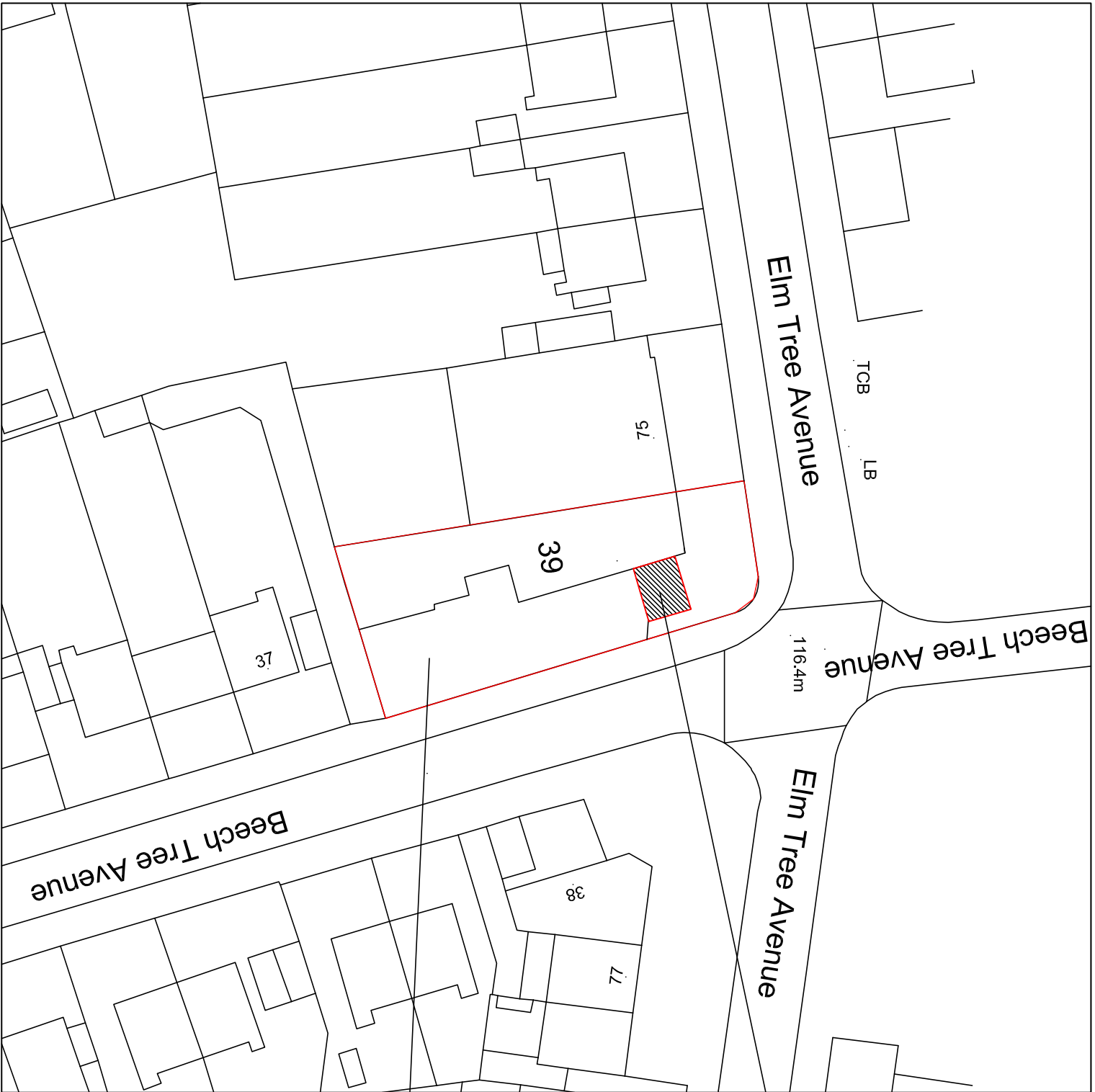


GENERAL NOTES

DRAWING CAN BE SCALED FOR PLANNING PURPOSES ONLY BUT IF IN ANY DOUBT ABOUT A DIMENSION OR ANY OF THE DRAWN INFORMATION PLEASE ASK CDRB ARCHITECTS LTD.

To Fir Tree Avenue



Block Plan  
Scale 1:500 @ A1

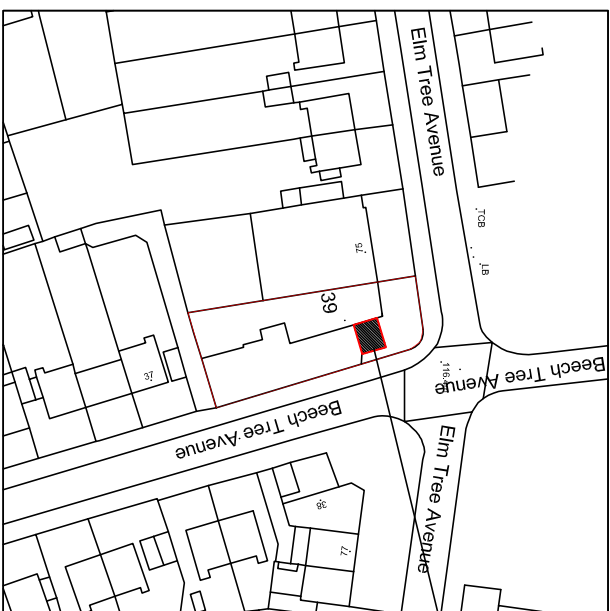
To Pine Tree Avenue

To Tile Hill Lane

Customer Queing  
Shelter (due to Covid  
separation rules)

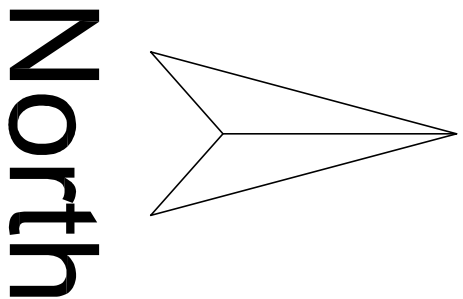
To Dunchurch  
Highway (A46)

Proposed Site



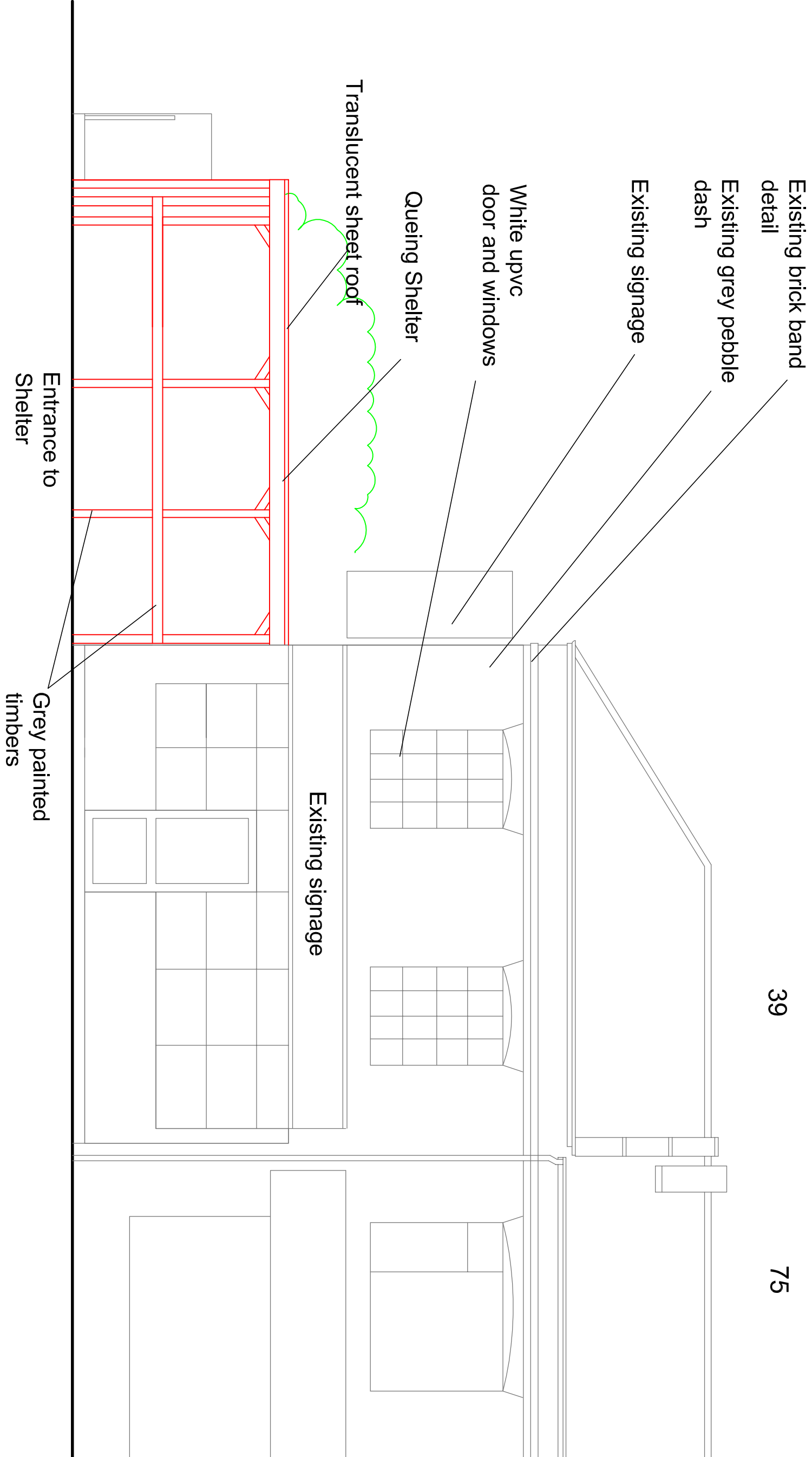
Location Plan  
Scale 1:1250 @ A1

Customer Queing  
Shelter (due to Covid  
separation rules)

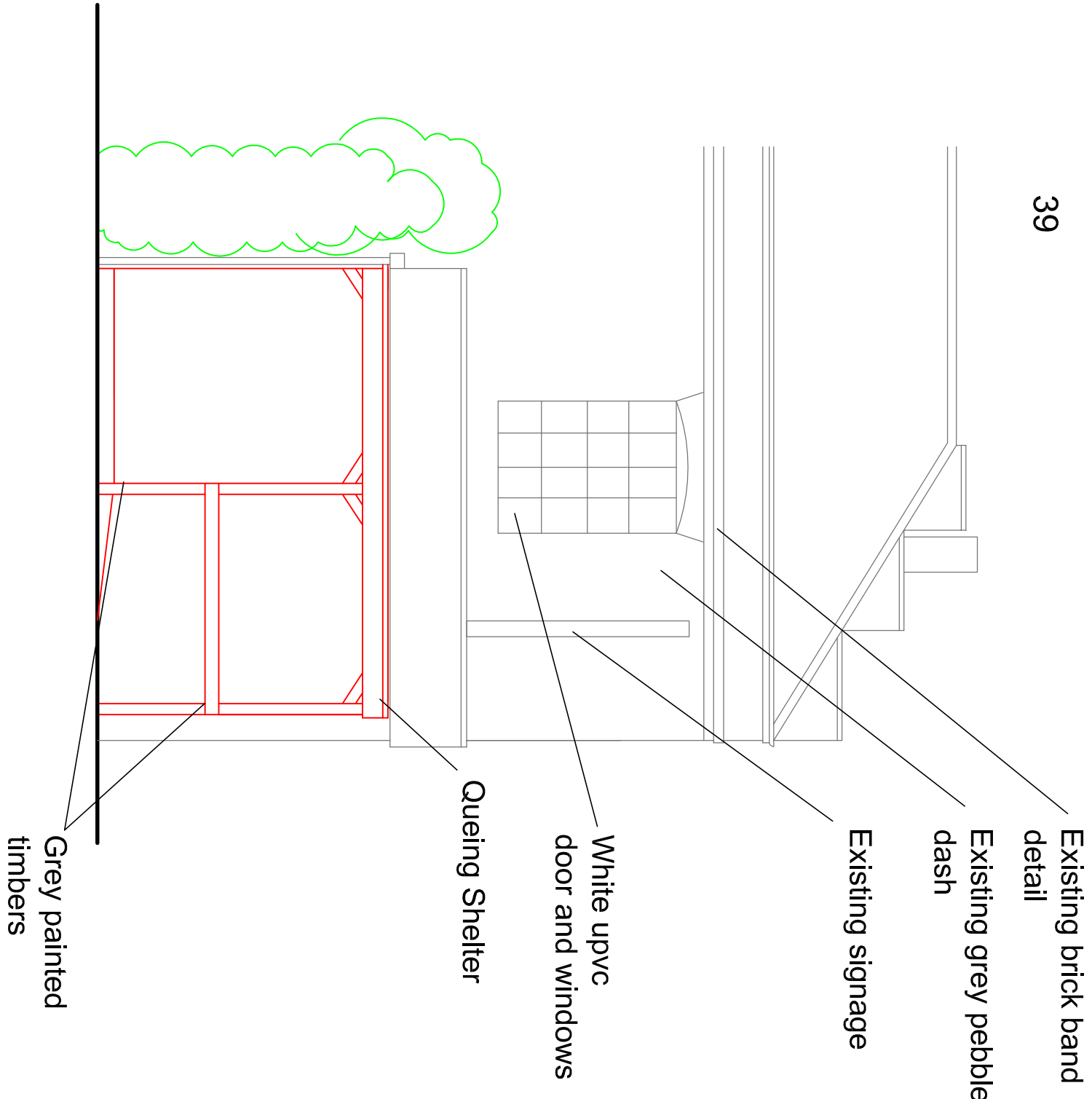


## PLANNING SUBMISSION

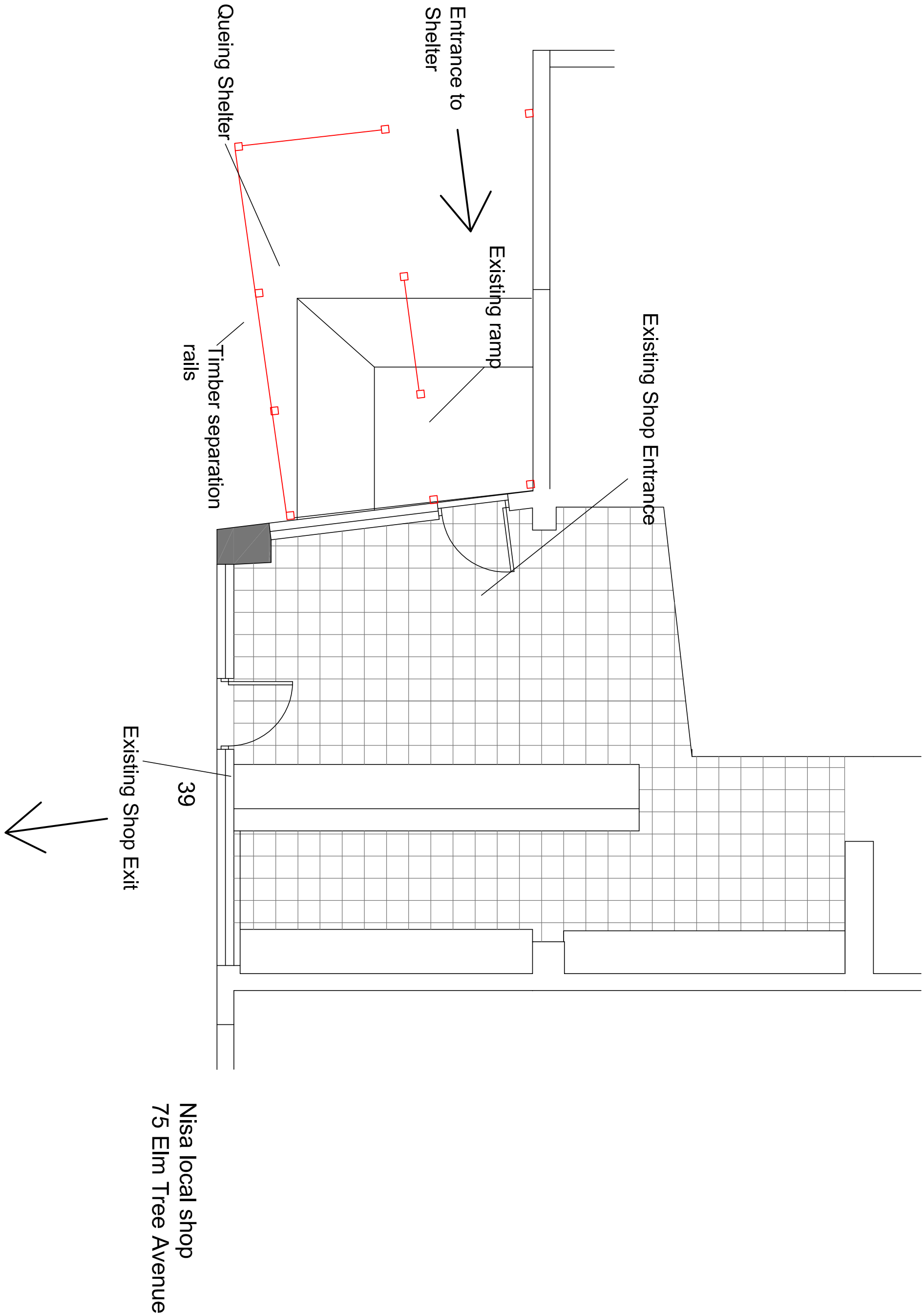
rev	date	by	checked
1	11/11/20	CR	CR
2	11/11/20	CR	CR
3	11/11/20	CR	CR
4	11/11/20	CR	CR
5	11/11/20	CR	CR
6	11/11/20	CR	CR
7	11/11/20	CR	CR
8	11/11/20	CR	CR
9	11/11/20	CR	CR
10	11/11/20	CR	CR
11	11/11/20	CR	CR
12	11/11/20	CR	CR
13	11/11/20	CR	CR
14	11/11/20	CR	CR
15	11/11/20	CR	CR
16	11/11/20	CR	CR
17	11/11/20	CR	CR
18	11/11/20	CR	CR
19	11/11/20	CR	CR
20	11/11/20	CR	CR
21	11/11/20	CR	CR
22	11/11/20	CR	CR
23	11/11/20	CR	CR
24	11/11/20	CR	CR
25	11/11/20	CR	CR
26	11/11/20	CR	CR
27	11/11/20	CR	CR
28	11/11/20	CR	CR
29	11/11/20	CR	CR
30	11/11/20	CR	CR
31	11/11/20	CR	CR
32	11/11/20	CR	CR
33	11/11/20	CR	CR
34	11/11/20	CR	CR
35	11/11/20	CR	CR
36	11/11/20	CR	CR
37	11/11/20	CR	CR
38	11/11/20	CR	CR
39	11/11/20	CR	CR
40	11/11/20	CR	CR
41	11/11/20	CR	CR
42	11/11/20	CR	CR
43	11/11/20	CR	CR
44	11/11/20	CR	CR
45	11/11/20	CR	CR
46	11/11/20	CR	CR
47	11/11/20	CR	CR
48	11/11/20	CR	CR
49	11/11/20	CR	CR
50	11/11/20	CR	CR
51	11/11/20	CR	CR
52	11/11/20	CR	CR
53	11/11/20	CR	CR
54	11/11/20	CR	CR
55	11/11/20	CR	CR
56	11/11/20	CR	CR
57	11/11/20	CR	CR
58	11/11/20	CR	CR
59	11/11/20	CR	CR
60	11/11/20	CR	CR
61	11/11/20	CR	CR
62	11/11/20	CR	CR
63	11/11/20	CR	CR
64	11/11/20	CR	CR
65	11/11/20	CR	CR
66	11/11/20	CR	CR
67	11/11/20	CR	CR
68	11/11/20	CR	CR
69	11/11/20	CR	CR
70	11/11/20	CR	CR
71	11/11/20	CR	CR
72	11/11/20	CR	CR
73	11/11/20	CR	CR
74	11/11/20	CR	CR
75	11/11/20	CR	CR
76	11/11/20	CR	CR
77	11/11/20	CR	CR
78	11/11/20	CR	CR
79	11/11/20	CR	CR
80	11/11/20	CR	CR
81	11/11/20	CR	CR
82	11/11/20	CR	CR
83	11/11/20	CR	CR
84	11/11/20	CR	CR
85	11/11/20	CR	CR
86	11/11/20	CR	CR
87	11/11/20	CR	CR
88	11/11/20	CR	CR
89	11/11/20	CR	CR
90	11/11/20	CR	CR
91	11/11/20	CR	CR
92	11/11/20	CR	CR
93	11/11/20	CR	CR
94	11/11/20	CR	CR
95	11/11/20	CR	CR
96	11/11/20	CR	CR
97	11/11/20	CR	CR
98	11/11/20	CR	CR
99	11/11/20	CR	CR
100	11/11/20	CR	CR



Side Elevation Facing Elm Tree Avenue  
Scale 1:50 @ A1



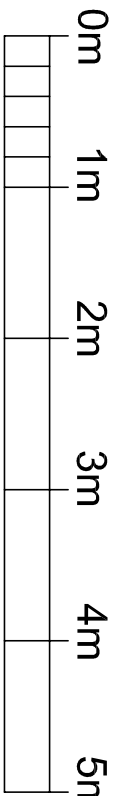
Side Elevation Facing Beech Tree Avenue  
Scale 1:50 @ A1



Ground Floor Plan Showing External Queing Shelter 50% Reduced in Size from Previous 'As Built' Structure  
Scale 1:50 @ A1

GENERAL NOTES

DRAWING CAN BE SCALED FOR PLANNING PURPOSES ONLY BUT IF IN ANY DOUBT ABOUT A DIMENSION OR ANY OF THE DRAWN INFORMATION PLEASE ASK CDRB ARCHITECTS LTD.



PLANNING SUBMISSION

rev	date	by	checked
cdrb architects ltd			
cdrb architects ltd 39 Beech Tree Avenue Coventry CV3 1JQ			
Job title			
Customer Queing Shelter (due to Covid separation rules) at 39 Beech Tree Avenue Coventry trading as Beech Tree Fish Bar			
Drawing title			
Plans and Elevations			
scale	drawn by	date	checked by
1:50 @ A1	CR	June 2021	CDRB
job no.	drawing no.	revision	
72218	AL (P) 01		